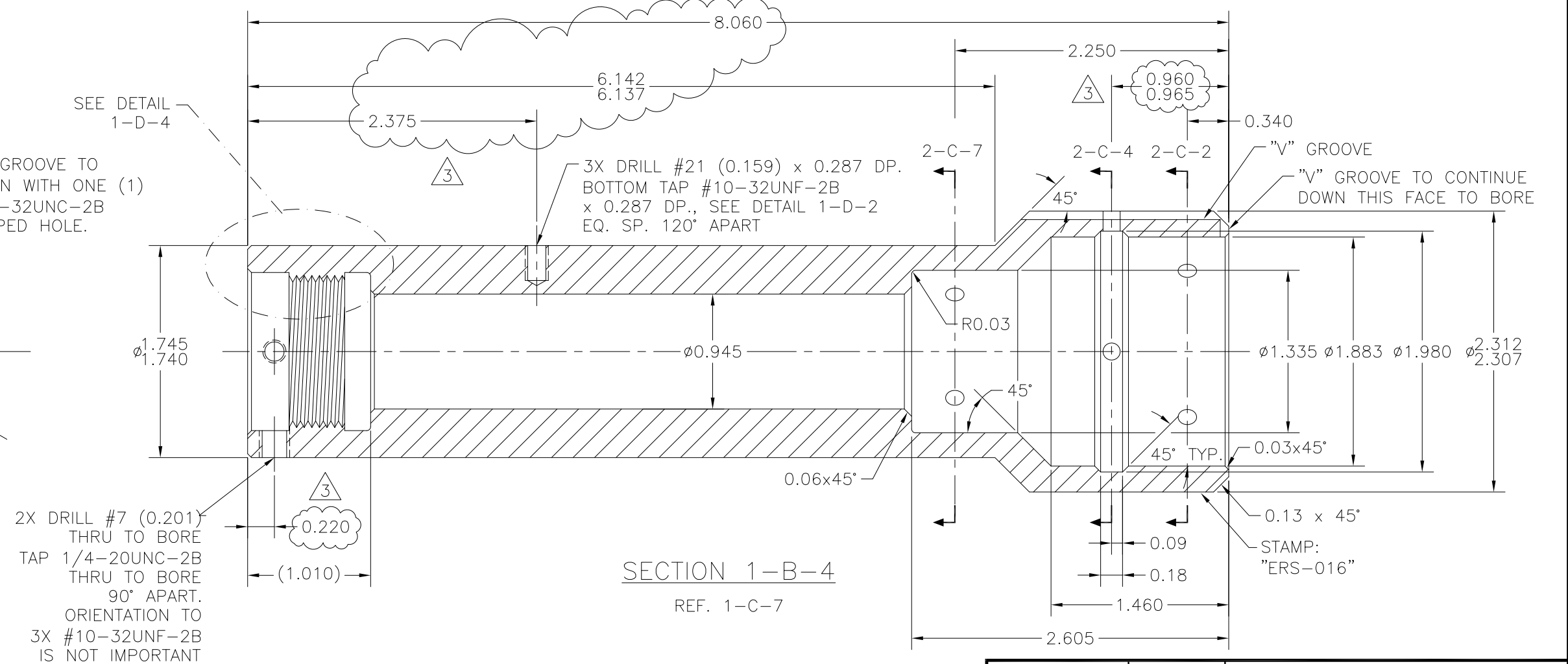
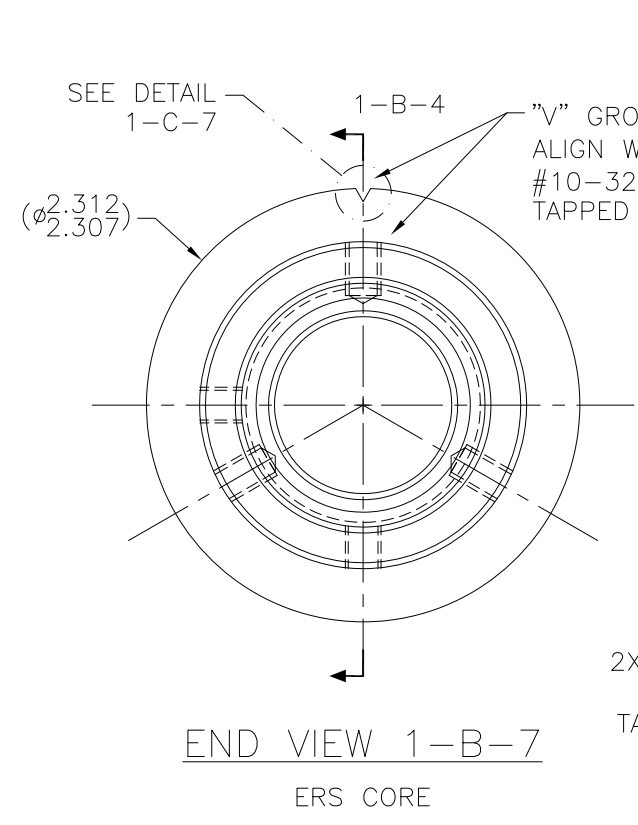
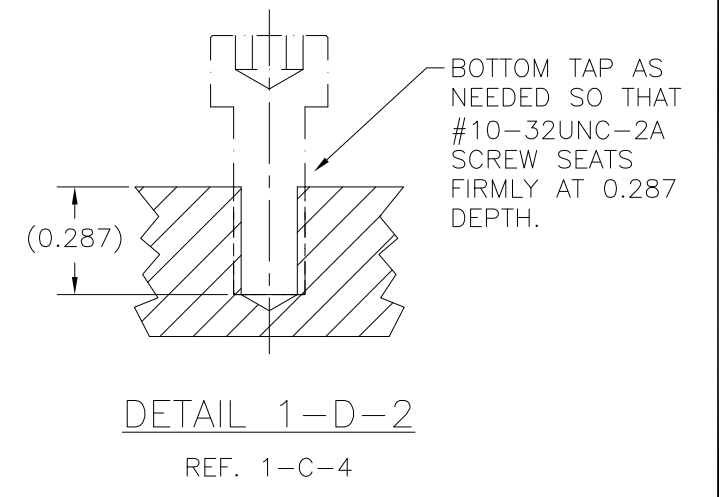
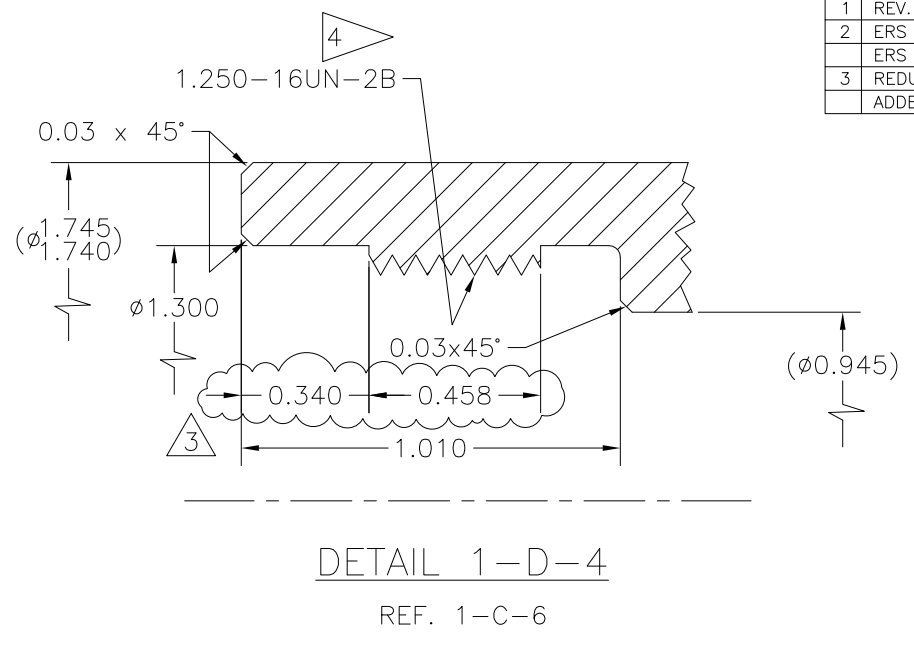
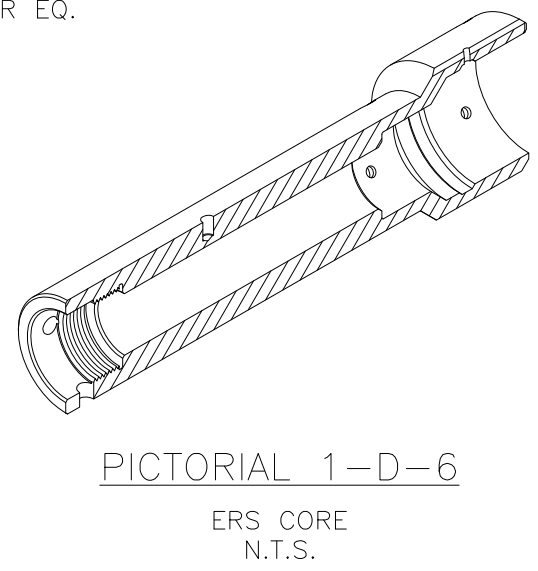
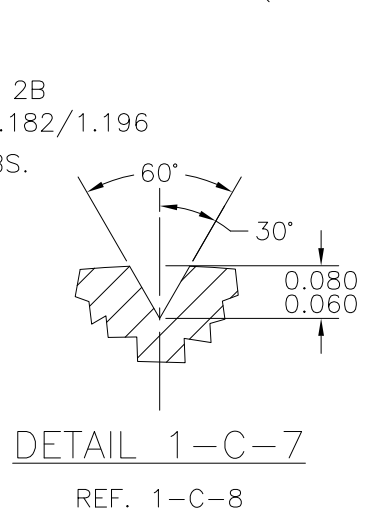


NOTES:

- MATERIAL: BAR, 17-4PH/15-5PH,  $\phi 2.312 \times 8.210$  LG.
- HEAT TREAT: COMMERCIAL HT.
- SURFACE TREATMENT: XYLAN COAT (O.D. ONLY) OR EQ.
- $\triangle 4$  1.250-16UN-2B  
 60° V-THREAD  
 INTERNAL CLASS 2B  
 MINOR DIA. = 1.182/1.196
- WEIGHT: 3.49 LBS.

REVISIONS				
NO	DESCRIPTION	DATE	BY	APR/DATE
0	ISSUED FOR MANUFACTURE	05/12/10		
1	REV. O.D. FROM 1.755/1.750 TO 1.745/1.740	05/28/10		
2	ERS V.1 DID NOT HAVE LOWER END CAVITY DETAILS, ERS V.2 REQUIRES THEM	2/21/11		
3	REDUCED LENGTH BY 0.15, CHG. UPPER END CAVITY ADDED DIMENSION FOR INTERNAL GROOVE ON LOWER END	4/7/11		

D  
C  
B  
A



TOLERANCES: UNLESS OTHERWISE SPECIFIED 0.X ± 0.030 0.XX ± 0.010 0.XXX ± 0.005 ANGLES ± 1/2° BREAK EDGES 0.015 x 45° MIN. FINISH 125 ✓ [0.010] A ALL DIMS ARE IN INCHES, UNLESS NOTED OTHERWISE.	PROPRIETARY NOTICE THIS DRAWING AND THE INFORMATION IT CONTAINS ARE CONSIDERED CONFIDENTIAL, AND MAY NOT BE REPRODUCED, COPIED OR USED, IN PART OR IN WHOLE, WITHOUT PRIOR WRITTEN CONSENT.	<b>Integrated Ocean Drilling Program</b> TEXAS A&M UNIVERSITY 1000 DISCOVERY DRIVE COLLEGE STATION, TX 77845	
		SHEET 1 OF 2 SCALE 1:2 BY KM DATE 04/01/10	TITLE ERS CORE SYSTEM ERS v.2 ASSEMBLY 3 ERS CHECKED JCS APPROVED TP SIZE D P/N ERS-016 REV. 3